

TORRE TABLE COLLECTION

TORRE RECTANGLE CONCRETE DINING TABLE - 10'

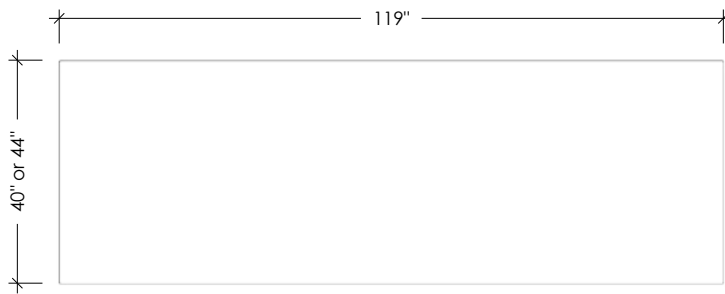
SKU: TBL-TORRE-REC-10

- 8 concrete color options
- Concrete table top is 3.5" thick
- 3.5" x 3.5" tube steel base available in 2 finishes (stainless steel is 4" x 4")
- Leg clearance is 26.5" high
- Intended for indoor use (outdoor upon request)
- Handmade in the USA

Table Sizes:

- 119"L x 40"W x 30"H
- 119"L x 44"W x 30"H

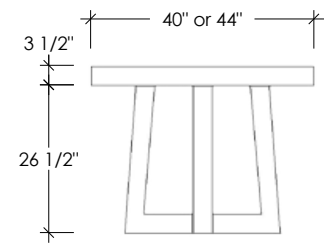
PLAN VIEW



FRONT ELEVATION



SIDE ELEVATION



Concrete Colors



Metal Base Finishes

