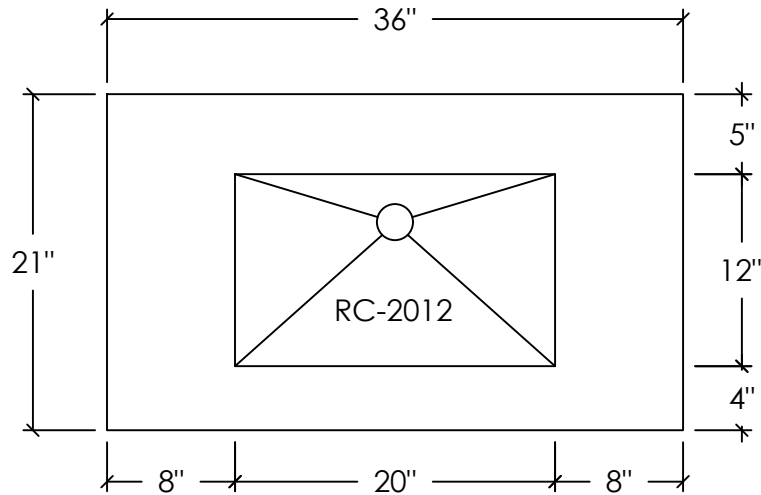
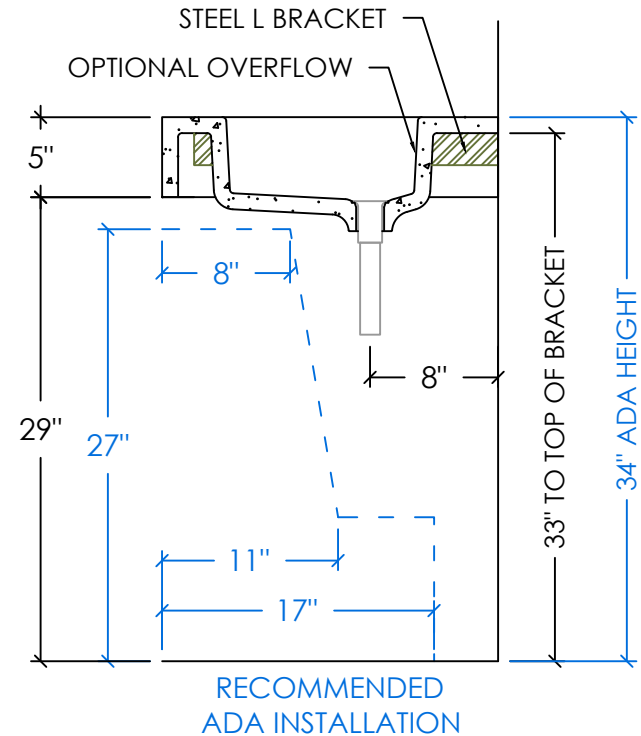


PLAN VIEW

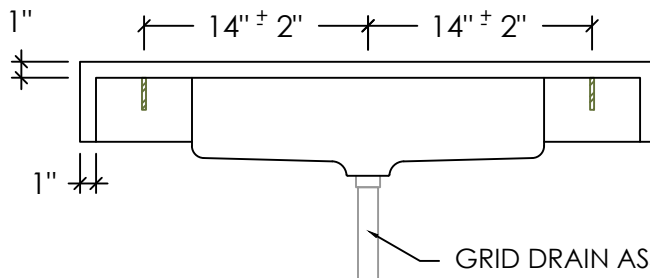


RIGHT SECTION





REAR ELEVATION

L BRACKET LOCATION RANGE (SEE BRACKET MOUNTING INSTRUCTIONS)



GRID DRAIN ASSEMBLY:
TAILPIECE = 1 1/4" DIAM x 6" LENGTH
(4 FINISHES)

SPECIFICATIONS	
SINK BASIN:	
- SINK MODEL #: RC-2012 = 20" x 12" x 5 1/4"	
- COMPLIANCE & CERTIFICATIONS:	
	CSA B45.8/IAPMO Z403 ASME A112.18.2/CSA B125.2 CODE = RC-ST-1-1-36x21-(C)-(O)
	ICC A117.1
STANDARD FAUCET & SOAP HOLE CONFIGURATIONS (CUSTOMIZABLE):	
- 0 HOLES - WALL-MOUNT FAUCET	
- 1 SINGLE FAUCET HOLE OR TRIPLE HOLE SET CENTERED ON SINK BASIN	
- SOAP HOLE 5" MINIMUM TO LEFT OR RIGHT OF FAUCET HOLE	
- TRIPLE HOLE SET = 8" SPREAD	
- HOLE DIAMETER = 1 3/8"	
- HOLE(S) CENTERED 2 1/4" OFF OF BACK OF SINK BASIN	
- OPTIONAL OVERFLOW ASSEMBLY (D-OK-125) CENTERED ON REAR BASIN WALL	